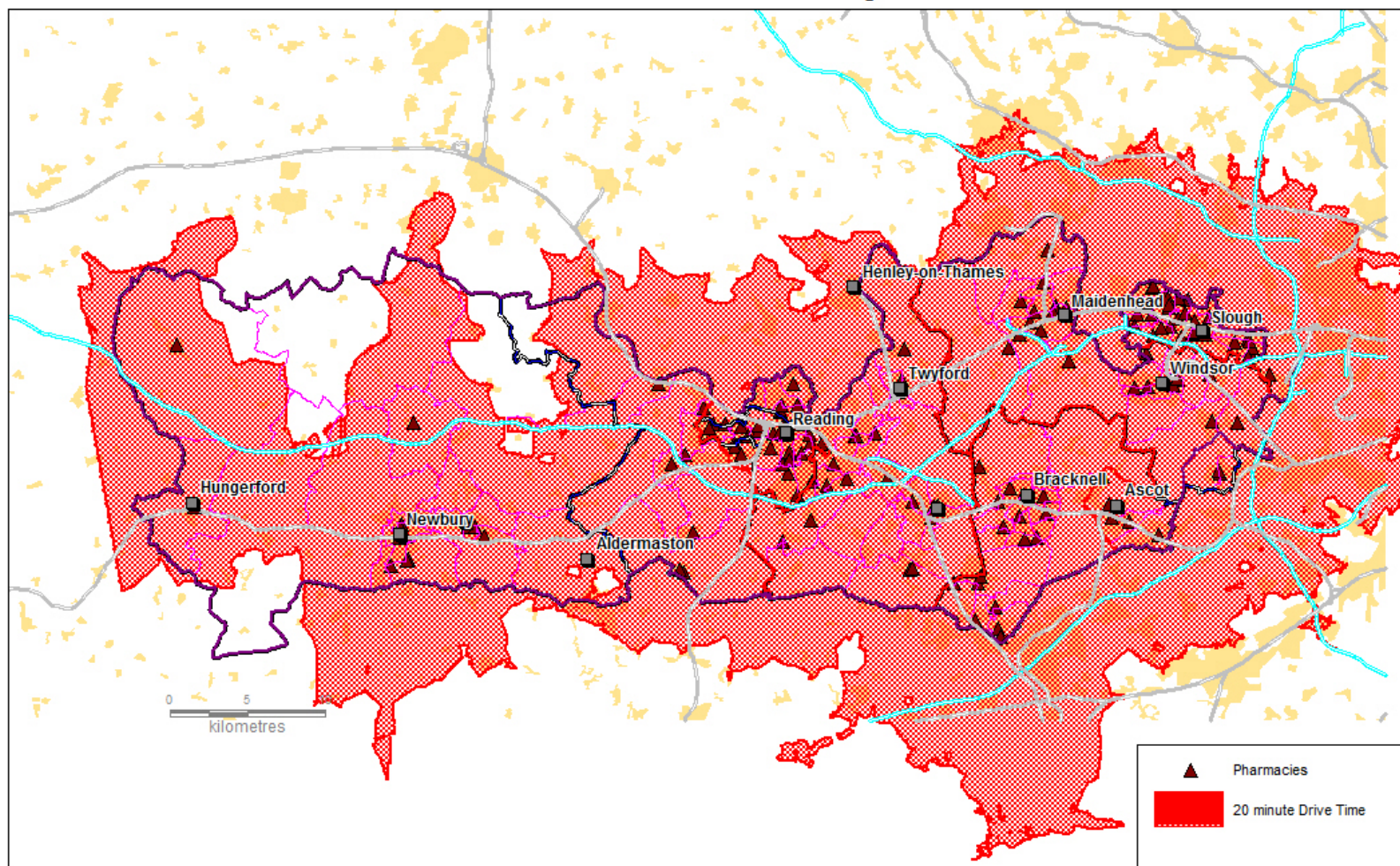


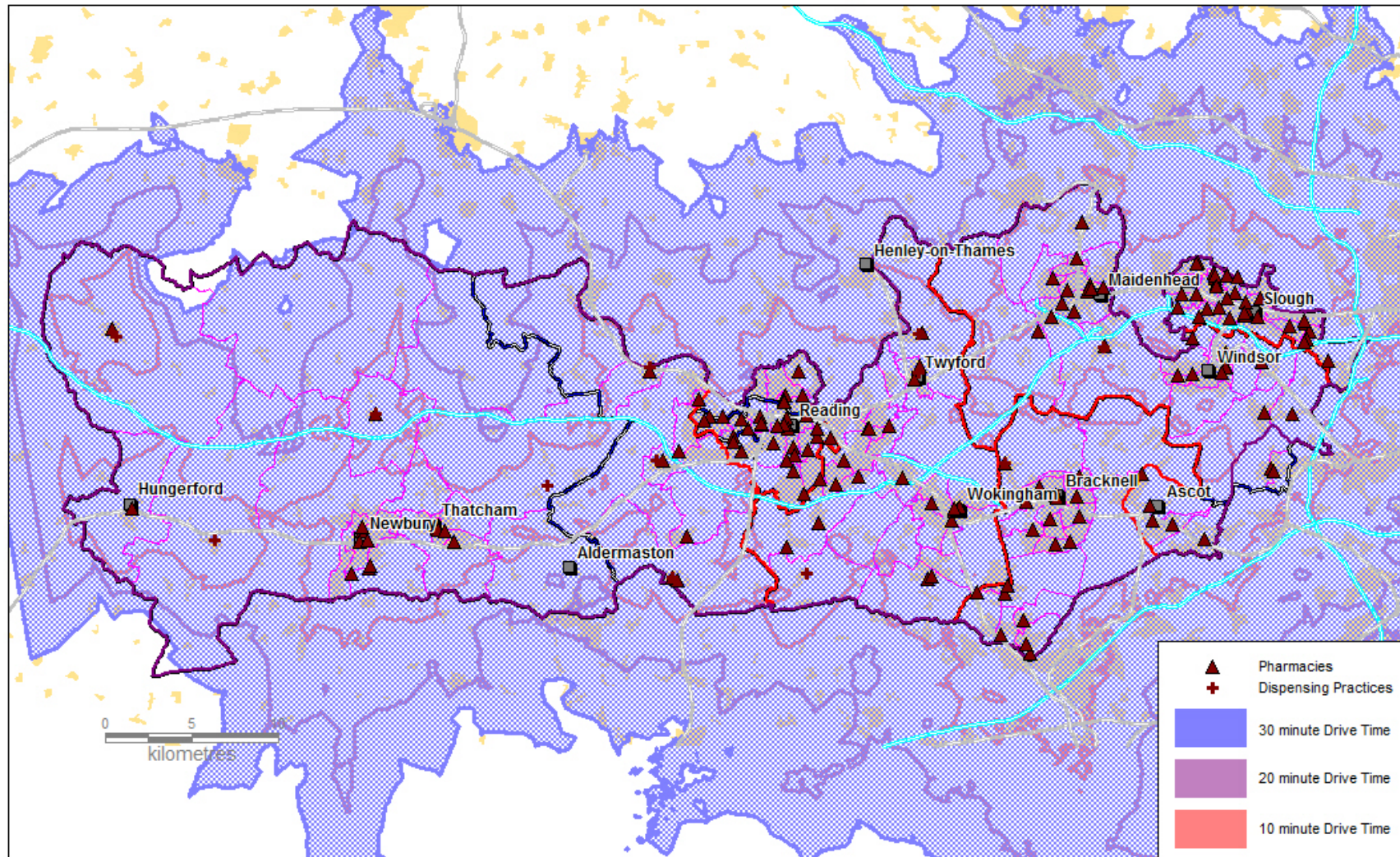
Berkshire - Pharmacy Access



Reproduced from OS data by permission of Ordnance Survey, on behalf of the Controller of Her Majesty's Stationery Office (Licence No. OSKWFG1110), NAVTEQ data by permission of NAVTEQ Corporation Licence No. NVMM0611, NVMM0612) GeoPlan data by permission of Geoplan (Licence No. GPKW9912) © Crown Copyright - 2014 All rights reserved

Berks_PNA_Apr14_v1.wor 15/05/2014 Sid Beauchant BHFT

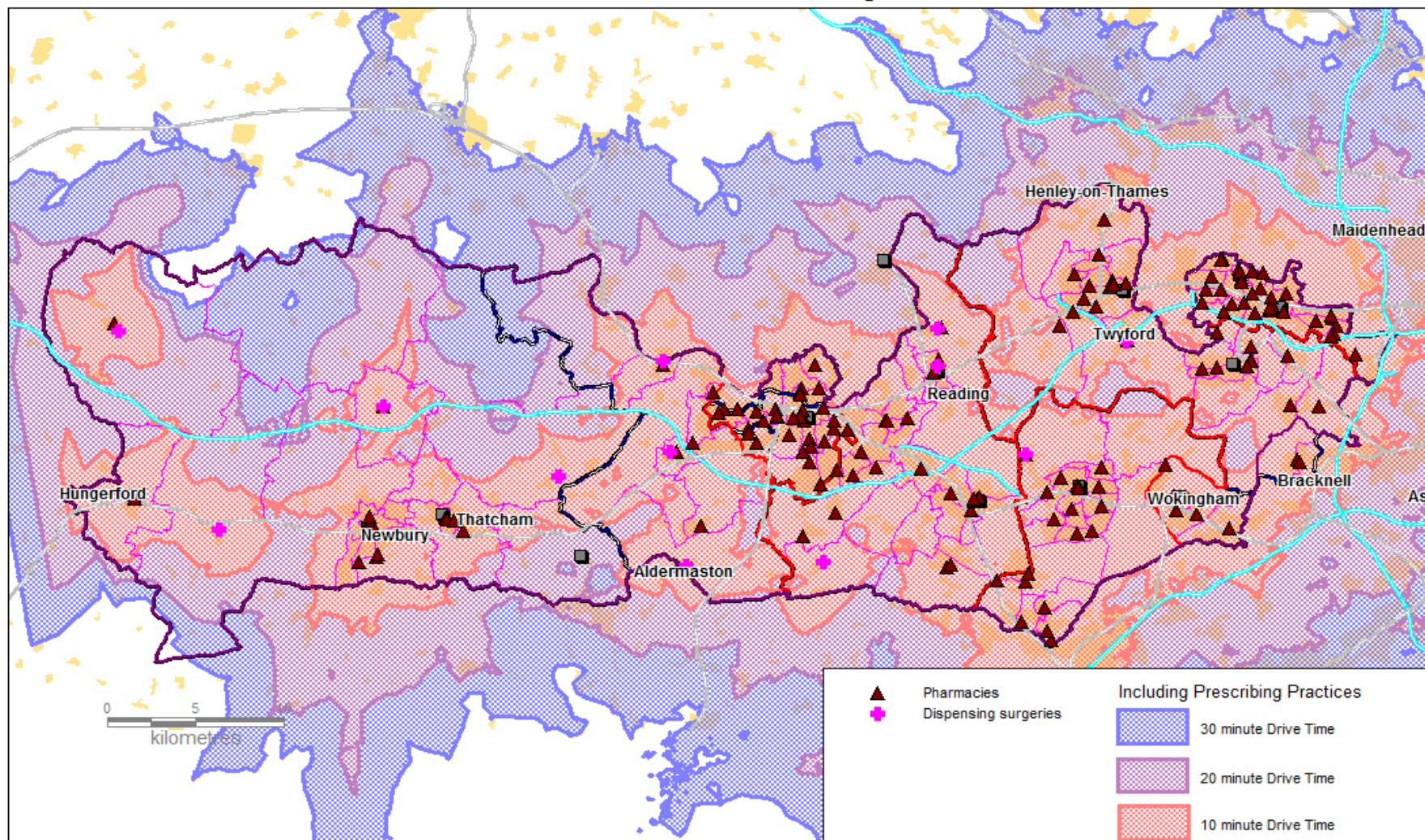
Berkshire - Pharmacy Access



Berks_PNA_Jul14_v1.wor 14/07/2014 Sid Beauchant BHFT

Reproduced from OS data by permission of Ordnance Survey, on behalf of the Controller of Her Majesty's Stationery Office (Licence No. OSKWFG1110), NAVTEQ data by permission of NAVTEQ Corporation Licence No. NVMM0611, NVMM0612) GeoPlan data by permission of Geoplan (Licence No. GPKW9912) © Crown Copyright - 2014 All rights reserved

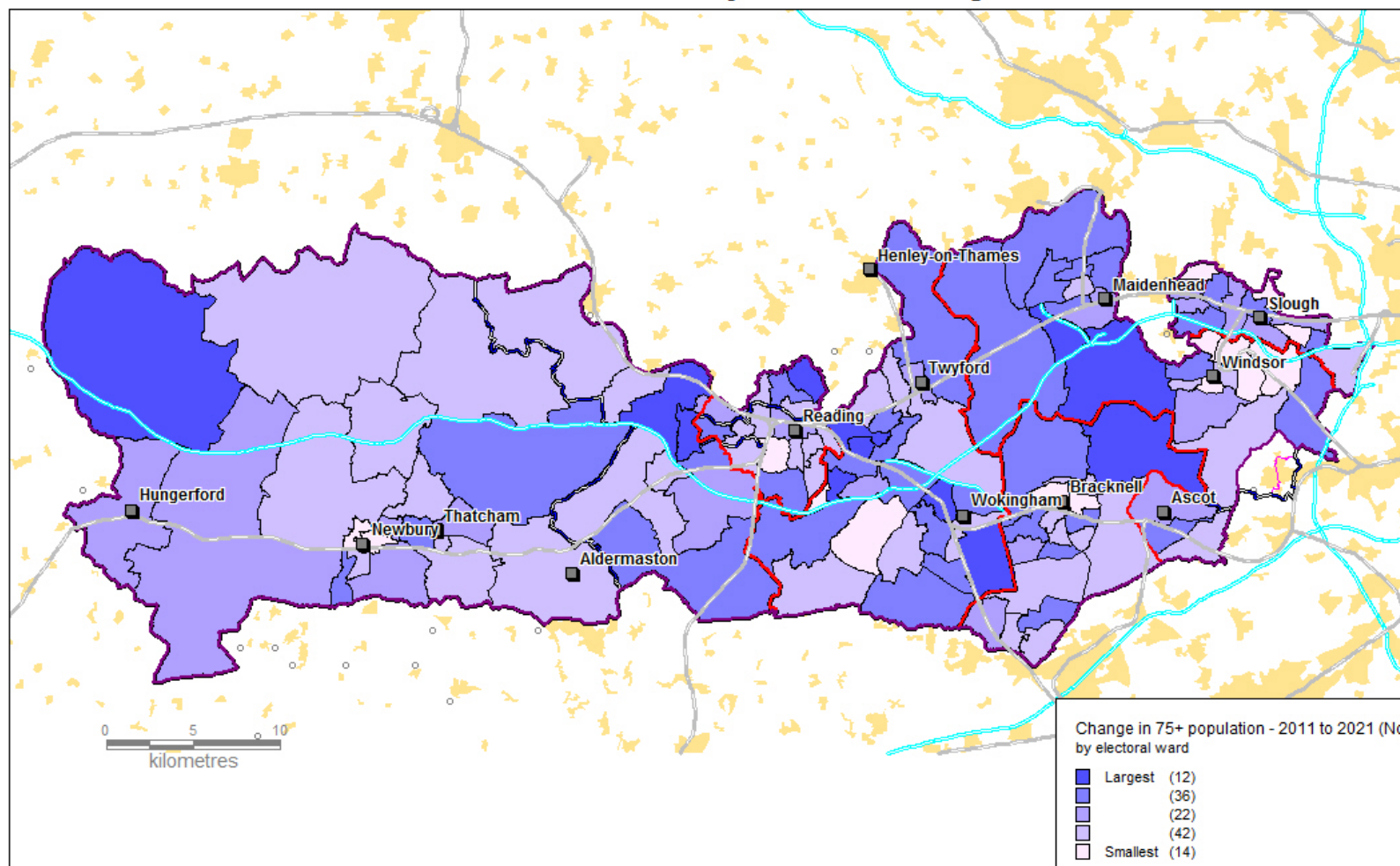
Berkshire - Pharmacy Access



Berks_PNA_Aug14_DT_v2.wor 17/12/2014 Sid Beauchant BHFT

Reproduced from OS data by permission of Ordnance Survey, on behalf of the Controller of Her Majesty's Stationery Office (Licence No. OSKWFG1110), NAVTEQ data by permission of NAVTEQ Corporation Licence No. NVMM0611, NVMM0612) GeoPlan data by permission of Geoplan (Licence No. GPKW9912) © Crown Copyright - 2014 All rights reserved

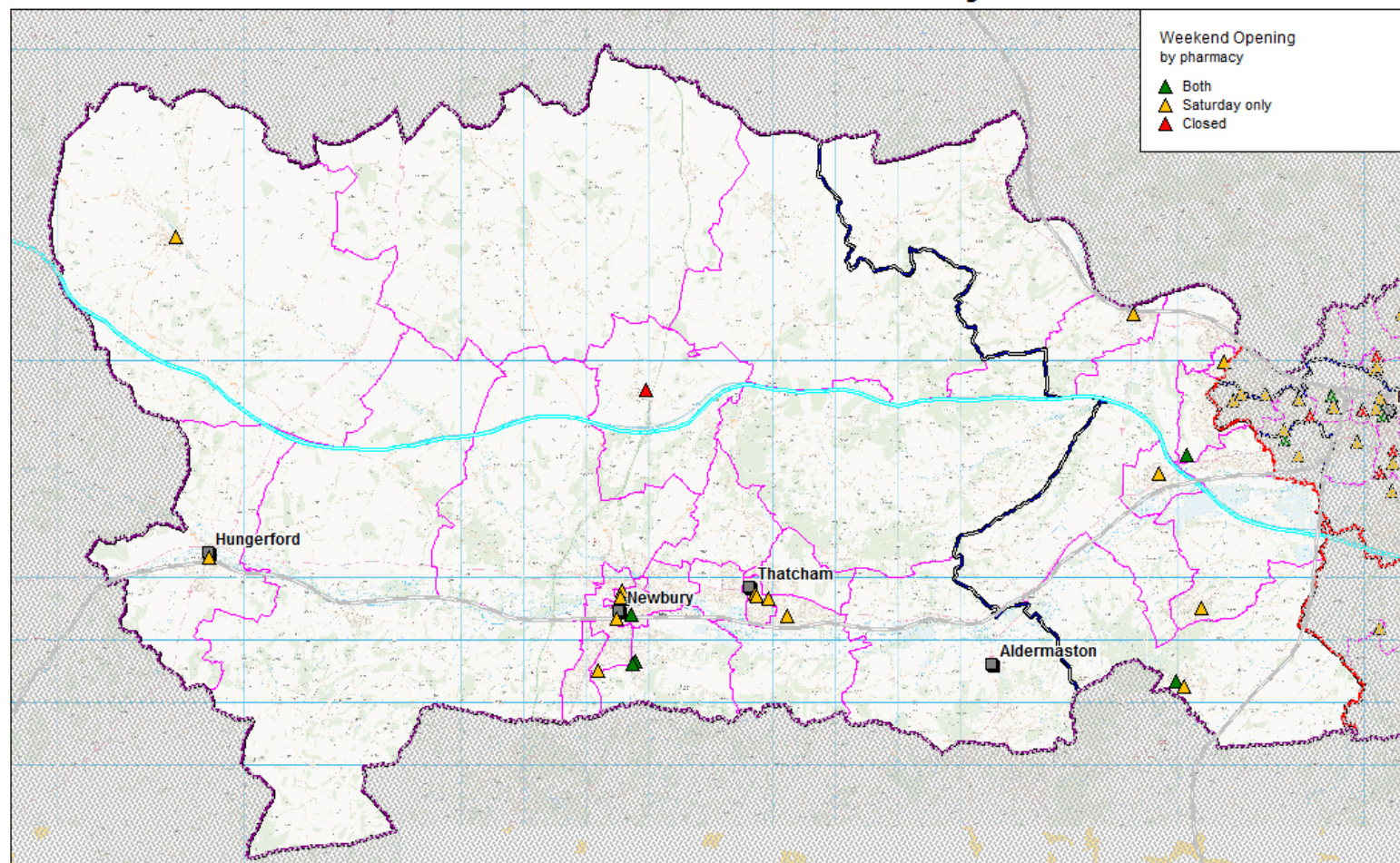
Local estimated Population Projections



PROJ_Local_2011_Ward_Berks.wor 19/05/2014 Sid Beauchant BHFT

Reproduced from OS data by permission of Ordnance Survey, on behalf of the Controller of Her Majesty's Stationery Office (Licence No. OSKWFG1110), NAVTEQ data by permission of NAVTEQ Corporation Licence No. NVMM0611, NVMM0612) GeoPlan data by permission of Geoplan (Licence No. GPKW9912) © Crown Copyright - 2014 All rights reserved

West Berkshire - Pharmacy Access



Berks_PNA_Aug14_v1_WE.wor 18/11/2014 Sid Beauchant BHFT

Reproduced from OS data by permission of Ordnance Survey, on behalf of the Controller of Her Majesty's Stationery Office (Licence No. OSKWFG1110), NAVTEQ data by permission of NAVTEQ Corporation Licence No. NVMM0611, NVMM0612) GeoPlan data by permission of Geoplan (Licence No. GPKW9912) © Crown Copyright - 2014 All rights reserved

Opening Hours

CODE	ADDRESS	POSTCODE	TOWN	TRADING NAME	OPENING HOURS - Saturday	OPENING HOURS - Sunday
FC776	125 High Street	RG17 0DL	Hungerford	Boots the Chemists	9:00-12:30; 13:00-17:00	Closed
FT063	The Broadway	RG17 8XY	Lambourn	Lambourn Pharmacy	9:00-13:00	Closed
FLP66	Mortimer Surgery	RG7 3SQ	Mortimer Common	Mortimer Pharmacy	7:30-22:05	8:00-22:00
FJV60	4-5 Northbrook Street	RG14 1DJ	Newbury	Boots the Chemists	8:30-18:00	10:00-16:00
FP041	Unit 10, Newbury Retail Park	RG14 7HU	Newbury	Boots The Chemists	8:00-24:00	10:00-16:00
FPC92	82-83 Bartholomew Street	RG14 5EF	Newbury	your local Boots pharmacy	8:30-13:00	Closed
FWX13	12 The Broadway	RG14 1BA	Newbury	Day Lewis PLC	9:00-13:00	Closed
FDN76	East Lane	RG20 8UY	Newbury	Downland Pharmacy	Closed	Closed
FL172	Monks Lane	RG14 7RW	Newbury	Wash Common Pharmacy	8:45-17:00	Closed
FVP85	Hectors Way	RG14 5AB	Newbury	Sainsburys Pharmacy	8:00-12:00; 14:00-20:00	Sun: 10:00-13:00; 15:00-16:00
FN512	81-82 Northbrook Street	RG14 1AE	Newbury	Superdrug Pharmacy	9:00-13:30; 14:00-17:30	Closed
FK567	Tesco Extra	RG14 7HB	Newbury	Tesco Pharmacy	6:30-22:00	10:00-16:00
FCT83	3 The Square	RG8 7AQ	Pangbourne	Lloydspharmacy	9:00-17:30	Closed
FEJ88	Savacentre	RG31 7SA	Reading	Sainsburys Pharmacy	8:00-20:00	10:00-16:00
FFT63	Reading Road	RG7 3YJ	Burghfield	Burghfield Pharmacy	9:00-13:00	Closed
FRR59	24 West End Road	RG7 3TF	Mortimer	Lloydspharmacy	9:00-17:30	Closed
FWP83	27 High Street	RG7 5AH	Theale	Lloydspharmacy	9:00-13:00	Closed
FM678	5 The Colonnade	RG31 6PR	Tilehurst	Overdown Pharmacy	9:00-13:00	Closed
FE788	Thattham Medical Practice	RG18 3HD	Thattham	Boots the Chemists	9:00-12:00	Closed
FQD69	2 The Burdwood Centre	RG19 4YA	Thattham	Lloydspharmacy	9:00-13:00	Closed
FTJ67	3-5 Crown Mead	RG18 3JW	Thattham	Lloydspharmacy	9:00-17:30	Closed

Appendix 3

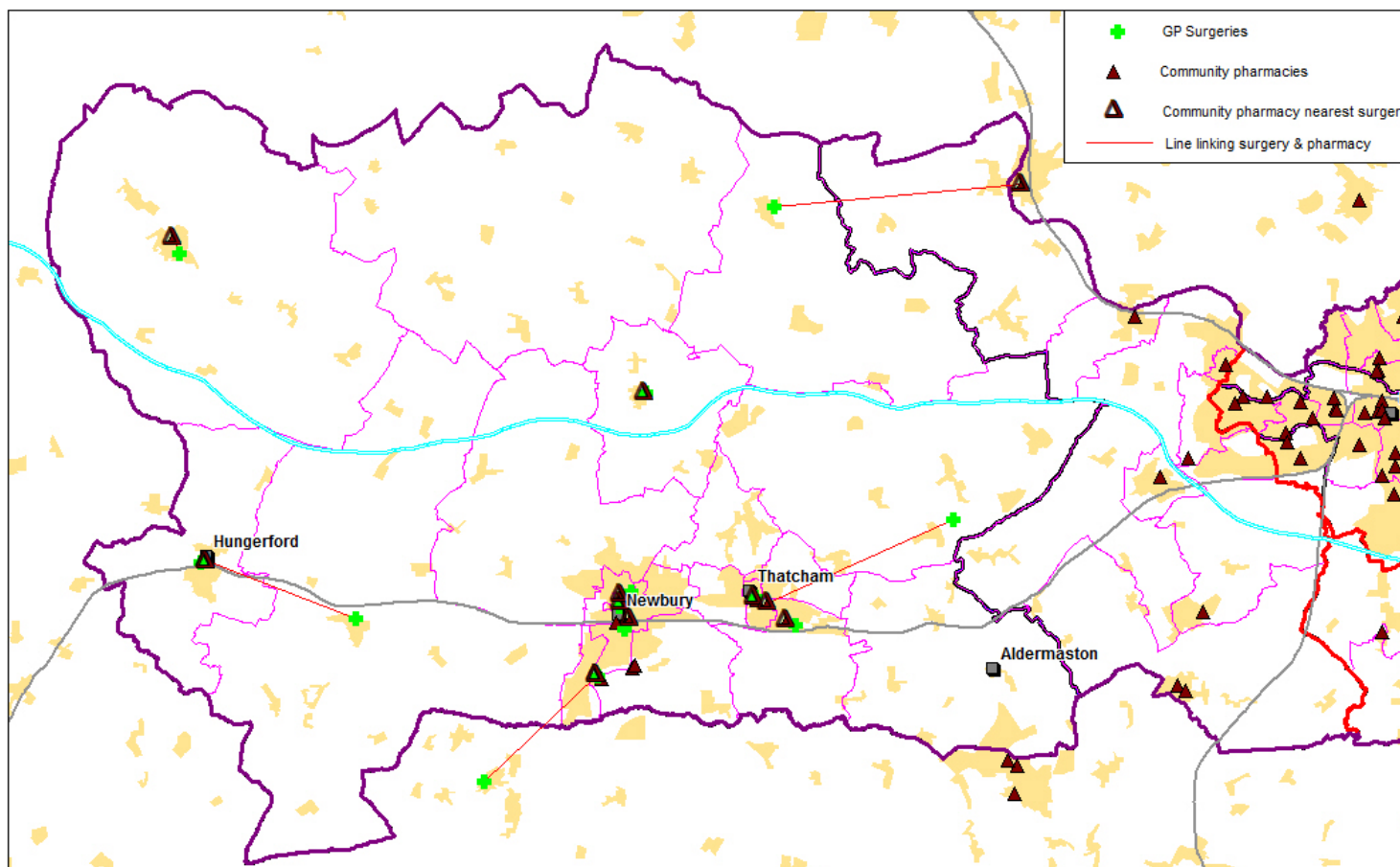
FXR54	7 Kingsland Centre	RG19 3HN	Thattham	Lloydspharmacy	9:00-17:30	Closed

**Pharmacy Access in West Berkshire
Week end GP services and pharmacy access**

Id	Org_Code	Surgery	Post Code	Weekend opening	Minimum distance km	CODE	Nearest pharmacy	Postcode	Weekend opening
1	J82054000	Kintbury & Woolton Hill Surgery	RG17 9UX	Closed	5.51	FC776	Boots the Chemists	RG17 0DL	Saturday only
2	J82054001	Woolton Hill Surgery	RG20 9UL	Closed	5.95	FL172	Wash Common Pharmacy	RG14 7RW	Saturday only
3	K81002000	Eastfield House Surgery	RG14 7LW	Closed	0.46	FVP85	Sainsbury's Pharmacy	5AB RG14	Both
4	K81017000	Falkland Surgery	RG14 7DF	Closed	0.12	FL172	Wash Common Pharmacy	7RW RG20	Saturday only
5	K81050000	Downland Practice*	RG20 8UY	Closed	0	FDN76	Downland Pharmacy	8UY	Closed
6	K81050001	Compton Surgery	RG20 6NJ	Closed	9.39	FDE03	Lloyds Pharmacy	RG8 9AT	<i>Saturday only†</i>
7	K81052000	Lambourn Surgery	RG17 8PS	2 x Saturday a month	0.75	FT063	Lambourn Pharmacy	RG17 8XY	Saturday only
8	K81057000	Hungerford Surgery	RG17 0HY	Half Saturday	0.48	FC776	Boots the Chemists	0DL RG14	Saturday only
9	K81061000	Northcroft Surgery	RG14 1BU	Alt Saturday	0.19	FJV60	Boots the Chemists	1DJ RG14	Both
10	K81063000	St Mary's Road Surgery	RG14 1EQ	Closed	0.46	FWX13	Day Lewis Rankin Pharmacy	1BA RG18	Saturday only
12	K81073000	Thatcham Medical Practice	RG18 3HD	Alt Saturday	0	FE788	Boots the Chemists	3HD	Saturday only
13	K81102000	The Burdwood Surgery	RG19 4YF	1 x Saturday a month	0.35	FQD69	Lloyds Pharmacy	RG19 4YA	Saturday only
14	K81103000	Chapel Row Surgery	RG7 6NS	1 x Saturday a month	7.16	FXR54	Lloyds Pharmacy	RG19 3HN	Saturday only

† Oxfordshire pharmacy, opening times derived from website.

Berkshire - Pharmacy Access



BerksW_Pharm_Distance_0115.wor 27/01/2015 Sid Beauchant BHFT

Reproduced from OS data by permission of Ordnance Survey, on behalf of the Controller of Her Majesty's Stationery Office (Licence No. OSKWFG1110), NAVTEQ data by permission of NAVTEQ Corporation Licence No. NVMM0611, NVMM0612) GeoPlan data by permission of Geoplan (Licence No. GPKW9912) © Crown Copyright - 2015 All rights reserved